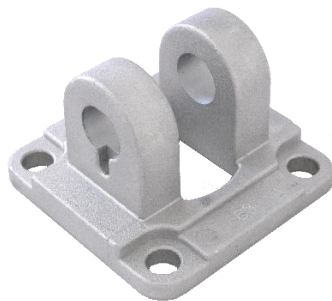


DIAM.	L	ES	IS	A	Z	H	B	N	S	D	E	RB	PC	LC	TC	ER	RA	R	NOTE
	+0.5 -0.5	h14	H14	+0.2 -0.2	+0.2 -0.2	+0.5 0	+0.5 -0.5	+0.5 -0.5	H11	F7	H14	+0.5 0	+0.2 0	+0.2 0	0 -0.5	MAX	+0.5 -0.5	+0.5 -0.5	
32	45	34	14	32.5	22	5	9	5.5	30	10	6.6	6.5	3	3.3	16.5	10	6.25	1	
40	52	40	16	38	25	5	9	5.5	35	12	6.6	7	4	4.3	18	12	7	1	
50	65	45	21	46.5	27	5	11	6.5	40	16	9	8	4	4.3	23	15	9.25	1	
63	75	51	21	56.5	32	5	11	6.5	45	16	9	8	4	4.3	23	18	9.25	1	
80	95	65	25	72	36	5	14	10	45	20	11	9.5	4	4.3	27	22	11.5	2	
100	115	75	25	89	41	5	14	10	55	20	11	9.5	4	4.3	27	22	13	2.5	
125	140	97	37	110	50	7	20	10	60	30	14	11	6	6.3	40	30	15	2.5	

A02



DIAMETER	WEIGHT (KG)	BASE CODE
32	0,037	A02032
40	0,060	A02040
50	0,100	A02050
63	0,173	A02063
80	0,375	A02080
100	0,560	A02100
125	1,115	A02125